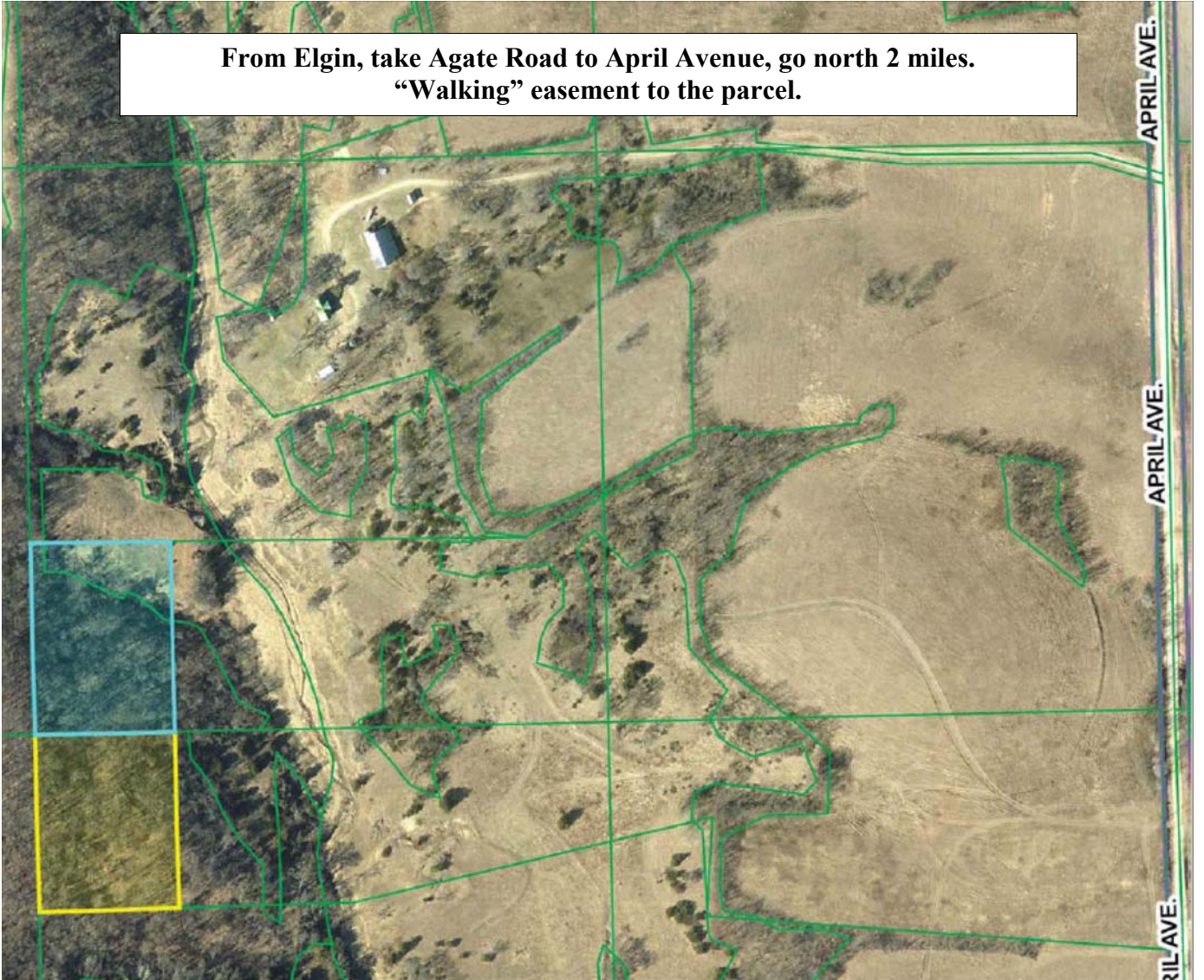


**Tom Brimeyer Farms LLC**  
**6 acres (m/l)**  
**Clayton County**  
**\$30,000**

From Elgin, take Agate Road to April Avenue, go north 2 miles.  
"Walking" easement to the parcel.



**Northeast Iowa Appraisal and  
Real Estate**

115 South Vine Street  
West Union, IA 52175  
563)422-3285

[www.neiar.com](http://www.neiar.com)

Leanne Cline 563)920-3055



**6.4 acres m/l in 2 parcels.**  
**RE taxes: \$34/yr.**

**Section 7 of  
Marion Township**



This information was obtained from sources deemed reliable but is not guaranteed by the listing broker.

