

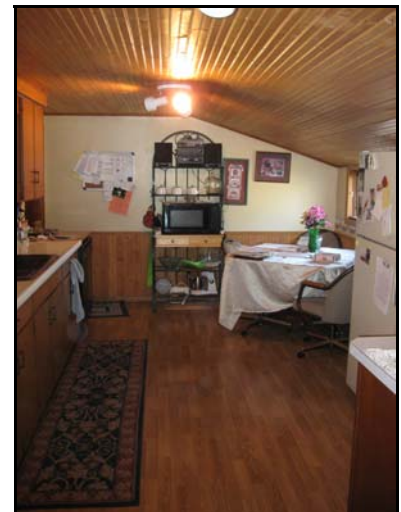


**Veridian Credit Union**  
**19585 K Avenue**  
**West Union**  
**\$42,000**

Located just 2 miles south of West Union. Large family room addition with newer windows and floorcoverings.

<b>STYLE</b>	1 1/2 story frame	<b>BEDROOMS</b>	3; 2-up, 1-main
<b>BUILT IN</b>	1900	<b>BATH</b>	1; main level
<b>SQ. FT.</b>	2,011 sq. ft.	<b>LAUNDRY</b>	1st floor
<b>TAXES</b>	\$756/yr	<b>PORCH</b>	150 sq.ft. enclosed
<b>LOT SIZE</b>	1.93 acres	<b>ATTIC</b>	No
<b>SCHOOL DIST.</b>	North Fayette	<b>DRIVEWAY</b>	Gravel
<b>ROOF TYPE</b>	Asphalt	<b>FIREPLACE</b>	No
<b>EXTERIOR</b>	Wood lap	<b>A/C</b>	Central
<b>INTERIOR WALLS</b>	Plaster/panel	<b>HEAT</b>	F/A L.P. Gas
<b>SUMP PUMP</b>	No	<b>W. SOFTENER</b>	No
<b>LP TANK</b>	Unknown	<b>W. HEATER</b>	Gas
<b>GARAGE</b>	1 car attached	<b>WATER</b>	Well-shared
<b>BASEMENT</b>	Partial, unfinished	<b>SEWER</b>	Septic system
<b>BSMT FLOOR</b>	Concrete	<b>OUTBUILDINGS</b>	Steel Utility Bldg

**Northeast Iowa Realty & Appraisal, Inc.**  
**115 South Vine Street**  
**West Union, IA 52175**  
**563-422-3285**  
**www.northeastiowarealty.com**  
**Leanne Cline - 563)920-3055**  
**leannecline@northeastiowarealty.com**



This information was obtained from sources deemed reliable but is not guaranteed by the listing broker.

**Veridian Credit Union  
19585 K Avenue  
West Union**



**Northeast Iowa Realty & Appraisal, Inc.  
115 South Vine Street  
West Union, IA 52175  
563-422-3285  
[www.northeastiowarealty.com](http://www.northeastiowarealty.com)  
Leanne Cline - 563)920-3055  
[leannecline@northeastiowarealty.com](mailto:leannecline@northeastiowarealty.com)**



*This information was obtained from sources deemed reliable but is not guaranteed by the listing broker.*